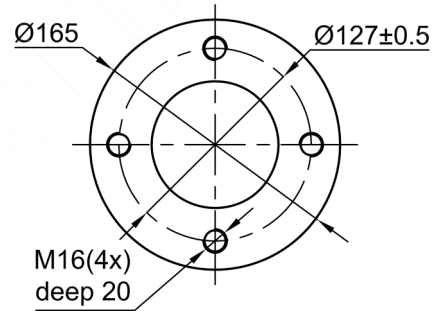


TECHNICAL REQUIREMENTS /CARATTERISTICHE TECNICHE		
ELECTRICAL PROPERTIES/PROPRIETA ELETTRICHE		
Rated Voltage	kV	252
Power Frequency Withstand (Wet)	kV	590
Dry Lightning Impulse Withstand Voltage(BIL)	kV	1295
PHYSICAL PROPERTIES/PROPRIETA FISICHE		
Dry Arc Distance	mm	2490
Min. Creepage Distance	mm	10500
MECHANICAL PROPERTIES/PROPRIETA MECCANICHE		
Specified Cantilever Load (SCL)	kN	13.5
Max. Design Cantilever Load (MDCL)	kN	7
Specified Tension Load (STL)	kN	150
Specified Torsion Load (SToL)	kNm	11
Specified Compression Load (SCoL)	kN	350
Applicable standard /Standard applicabili IEC 62231		



Top & Bottom View

ITEM No.	DESCRIPTION	MATERIALS	QTY
4	Flange	Galvanized Steel	1
3	Weather sheds	Silicone Rubber	
2	Core Rod	Glass fiber reinforced Epoxy Resin	1
1	Flange	Galvanized Steel	1

Quote (mm) senza indicazione di tolleranza secondo UNI EN 22768-1 grado: Fine Media Grossolana Molto grossolana
 Quotes (mm) without any tolerance indication are according to UNI EN 22768-1 std's: Fine Medium Coarse Very coarse

Disegno di proprietà della ISOLEX che si riserva tutti i diritti di legge / All rights pertaining to this drawing are reserved for ISOLEX

Cliente Customer	N. Ordine P. Order	Scala Scale 1:1	Codice Code FZSW-252/13.5
Conferma Acknowledg.		File	Revisione Revision - A4
			Foglio Sheet 1 of 1
Descrizione - Description Composite Station Post Insulator			Disegno N. - Dwg. No. ID10358