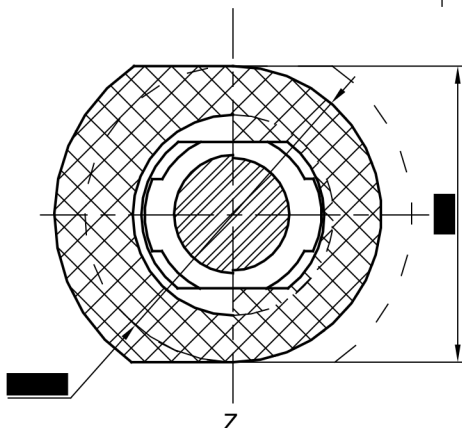
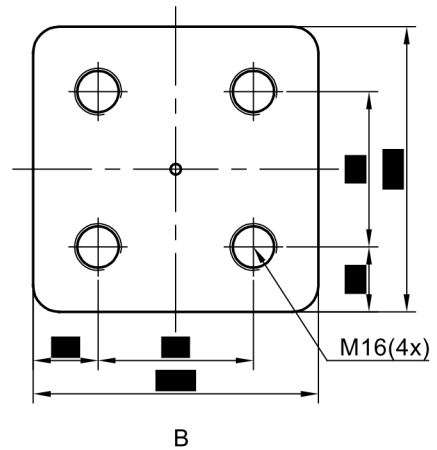
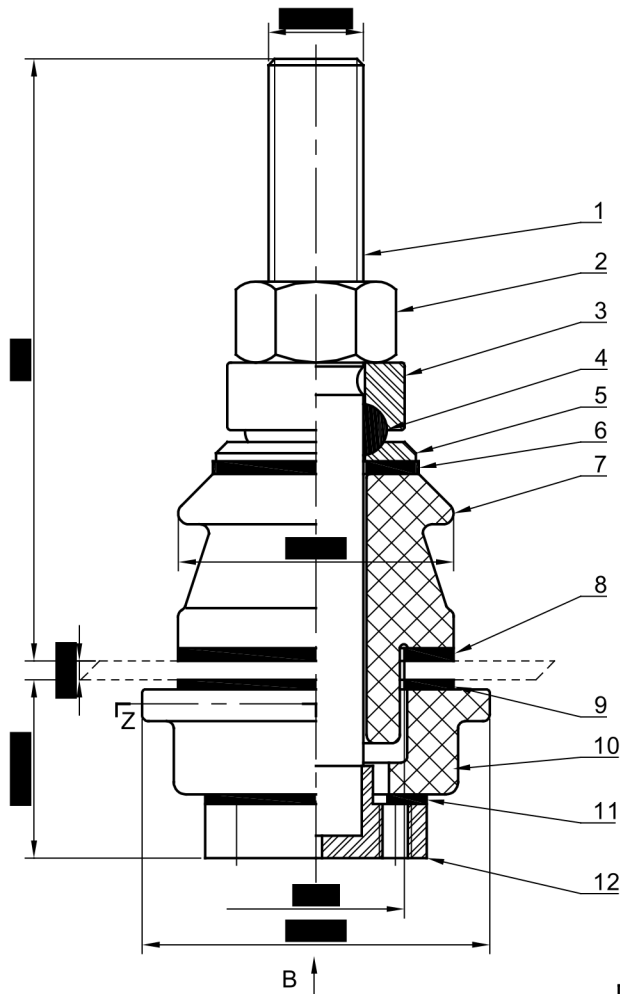


HP021105

TECHNICAL SPECIFICATION

1.Highest voltage rating	1.2kV
2.Rated current	3150A
3.Creepage distance	75mm
4.BIL rating	20kV
5.Cantilever load	3150N
6.Power frequency withstand voltage (wet/dry)	10kV/10kV



12	Base	Brass	1
11	Base gasket	Pressboard	1
10	Bottom insulation body	Porcelain	1
9	Internal gasket	Pressboard	1
8	Flange gasket	NBR	1
7	Top insulation body	Porcelain	1
6	Plain gasket	NBR	1
5	Washer	Brass	1
4	Ring gasket	NBR	1
3	Cover	Brass	1
2	Nut	Brass	1
1	Stem	Copper	1
NO	DESCRIPTION	MATERIALS	QTY

Material	Weight	
Porcelain		
	Date	Name
Drawn	2021-05-31	
Checked		
Approved		



Drawing No.		
ID10510		
UNIT	SCALE	COLOUR
mm	NTS	

Title **1kV/3150A (DIN 42530)**